

Agenda

East Bay Innovation Academy Board Meeting

Wednesday Sep 16, 2015 @ 8:00 PM at EBIA - 3400 Malcolm Ave, Oakland,
CA 94605

Agenda Item	Purpose	Who	Time
I. Opening Items			
A. Call the Meeting to Order			
B. Record Attendance and Guests			
C. Approve Minutes	Approve Minutes (Board Meeting on 09-10-15)	T. Levy	
D. Approve Minutes	Approve Minutes (Board Meeting on 08-20-15)	T. Levy	
II. Academic Excellence			
A. Academic Update: MAP, Quest, Intersession	FYI	D. Krugman	10
B. Highschool Strategy	FYI	D. Krugman	10
C. Social Emotional Learning Strategy	FYI	D. Krugman	10
D. Enrollment Update	FYI	D. Krugman	10
III. Finance			
A. August Financials	FYI	R. Cooper	10
IV. Development			
A. PAC Development Committee Update	FYI		10
V. Board Expansion Committee			
A. Expansion Committee Update	FYI	T. Pryor	5
VI. Other Business			
A. Consent Agenda	FYI	L. Jacobson Jones	5

Agenda Item	Purpose	Who	Time
VII. Closing Items			
A. Public Comment - up to 3 minutes/presenter	FYI		
B. Adjourn Meeting	Vote		

Agenda Cover Sheets

Section: II. Academic Excellence

Item: A. Academic Update: MAP, Quest, Intersession

Purpose: FYI

Goal:

Submitted by:

Related Material:

Sep. 2015 Board Deck(1).pdf

Section: III. Finance

Item: A. August Financials

Purpose: FYI

Goal:

Submitted by:

Related Material:

EBIA - August Financials -2015.09.11-mc YTD(2).pdf

EBIA - August Financials -2015.09.11-mc CASH FLOW(1).pdf

EBIA_Sep-2015_financial presentation-2015.09.14.pdf

Section: IV. Development

Item: A. PAC Development Committee Update

Purpose: FYI

Goal:

Submitted by:

Related Material:

EBIA September Board Dev Update 0915.pdf

Section: VI. Other Business

Item: A. Consent Agenda

Purpose: FYI

Goal:

Submitted by:

Related Material:

Local Plan April, 2015 Governance Revisions.pdf

EBIA - 2015-16 Check Register - am.pdf

EDCOE SELPA Assurances Signature Page - Charter School Board.pdf



Minutes

East Bay Innovation Academy Board Meeting

Thursday Sep 10, 2015 @ 12:00 PM at EBIA - 3400 Malcolm Ave, Oakland,
CA 94605

Board Members Present

Gary Borden (remote), Laurie Jacobson Jones, Rochelle Benning (remote),
Tali Levy (remote), Tom Pryor (remote)

Board Members Absent

Ken Berrick, Matt Williams

I. Opening Items

Call the Meeting to Order

Laurie Jacobson Jones called a meeting of the board of directors of East Bay Innovation Academy to order on Thursday Sep 10, 2015 @ 12:05 PM at EBIA - 3400 Malcolm Ave, Oakland, CA 94605.

Resolution for the Sale of receivables to Charter School Capital

Tom Pryor arrived late.

Laurie Jacobson Jones presented the Board with the resolution for the sale of receivables.

G. Borden made a motion to approve the Acknowledgement Resolutions for Sale of Receivables to Charter School Capital.

Rochelle Benning seconded the motion.

The board **VOTED** unanimously to approve the motion. A roll call vote was taken.

Resolution to change bank account where ACOE sends payments

Laurie Jacobson Jones presented the Board with the resolution to change the bank account for receipt of apportionment funding.

G. Borden made a motion to approve the Notification to ACOE of Bank Account for Electronic Receipt of Apportionment Funding.
Rochelle Benning seconded the motion.

The board **VOTED** unanimously to approve the motion. A roll call vote was taken.

II. Closing Items

Adjourn Meeting

There being no further business to be transacted, and upon motion duly made, seconded and approved, the meeting was adjourned at 12:10 pm.

Respectfully Submitted,
Tali Levy



Minutes

East Bay Innovation Academy Board Meeting

Thursday Aug 20, 2015 @ 7:30 PM at EBIA - 3400 Malcolm Ave, Oakland, CA 94605

Board Members Present

Gary Borden (remote), Laurie Jacobson Jones, Rochelle Benning, Tom Pryor (remote)

Board Members Absent

Ken Berrick, Matt Williams, Tali Levy

Guests Present

Devin Krugman, Renee Cooper

I. Opening Items

Call the Meeting to Order

Laurie Jacobson Jones called a meeting of the board of directors of East Bay Innovation Academy to order on Thursday Aug 20, 2015 @ 7:36 PM at EBIA - 3400 Malcolm Ave, Oakland, CA 94605.

Approve Minutes

Adjourn Open Session

Open Session adjourned at 7:37 p.m. to go into Closed Session Pursuant to Section 54957 by L. Jacobson Jones.

II. Academic Excellence

Resume Open Session and Record Attendance

Open Session resumed at 8:11 pm. Board Members Present: Laurie Jacobson Jones, Rochelle Benning, Gary Borden and Tom Pryor.

Teacher Preparation, Team Update

Devin Krugman presented board with Team Update and status of Teacher Preparation.

Devin Krugman reported on orientation and planning with new and returning teachers.

2015/16 Scope and Sequence and Bell Schedule

Devin Krugman presented Bell Schedule for 2015/2016 and addressed special needs within schedule.

Year 1 to 2 Curriculum Update

Devin Krugman presented results from testing and ways to improve upon the results.

III. Finance

2014/15 Results

Michelle Cho presented preliminary 2014/2015 financial results pending final audit. M. Cho presented the preliminary 2015/2016 budget as well as cash flow projections. L. Jacobsen Jones moved to authorize Director of Curriculum and Instruction. Motion seconded by Rochelle Benning. The board VOTED unanimously to approve the motion.

Financing Update

R. Benning discussed different financing options. Motion made by L. Jacobson Jones to move forward with CSC to factor November LCFF Apportionment. Motion amended by Tom Pryor to check with county if they will guarantee loan and if not to move forward with CSC. Amended motion seconded by Gary Borden. The board VOTED unanimously to approve the amended motion.

Updated Finance Policy

Tom Pryor moved to approve the new purchasing limits as proposed in the 8/20/2015 Agenda. Motion seconded by Rochelle Benning. Board VOTED unanimously to approve the motion.

Enrollment Update

L. Jacobson Jones presented enrollment update.

IV. Governance

Board Expansion Committee update

R. Benning reported on status of Expansion Committee.

V. Other Business

Consent Agenda

Nothing to report.

Policy Updates

D. Krugman discussed the policies being reviewed and proposed and modifications. Moved by R. Benning to approve the policies as presented. Motion seconded by Tom Pryor. Board VOTED unanimously to approve the motion.

VI. Closing Items

Adjourn Meeting

Motion by L. Jacobsen Jones to adjourn at 9:10p.m. Motion seconded by T. Pryor. Board VOTED to unanimously approve the motion.

There being no further business to be transacted, and upon motion duly made, seconded and approved, the meeting was adjourned at 09:10 pm.

Respectfully Submitted,
Renee Cooper

EBIA Team Updates

September, School Year 2015-2016

Academics

School Year 2015-2016

MAP Score Overview

Math

Grade	Low	Low Avg.	Avg.	High Avg.	High
6	20%	20%	12%	25%	23%
7	8%	19%	24%	19%	30%
8	14%	18%	18%	23%	26%

Reading

Grade	Low	Low Avg.	Avg.	High Avg.	High
6	16%	15%	10%	23%	36%
7	9%	12%	24%	27%	27%
8	12%	10%	24%	26%	29%

MAP Score Overview

Language

Grade	Low	Low Avg.	Avg.	High Avg.	High
6	18%	9%	21%	19%	33%
7	8%	13%	20%	28%	31%
8	10%	14%	18%	33%	25%

Science

Grade	Low	Low Avg.	Avg.	High Avg.	High
6	14%	19%	12%	18%	37%
7	7%	14%	17%	19%	43%
8	18%	12%	20%	21%	30%

MAP Score Overview

- **Areas of Strength:** SCALE PBL curriculum
- **Areas of Growth:** Reading performance
- **Next Steps:** Realignment of ELA and History curriculum

- **English Language Arts/Literacy**

- Reading
- Writing
- Listening
- Research/Inquiry

- **Mathematics**

- Problem Solving & Modeling/Data Analysis
- Concepts and Procedures
- Communicating Reasoning

Major Shifts in Assessment

- Common Core State Standards
- New Assessment Topics and Procedures
- Higher Benchmarks for Proficiency

SBAC Score Overview

- **Areas of Strength:** Math (Communicating Reasoning) performance, Research/Inquiry
- **Areas of Growth:** Reading performance, Opportunity gap
- **Next Steps:** Realignment of ELA and History curriculum, Targeted intervention

Level	State	OUSD	EBIA	Authorization Requirements
Percent Proficient (Levels 3 & 4)	<ul style="list-style-type: none"> • ELA - 44% • Math - 34% 	<ul style="list-style-type: none"> • ELA - 26% • Math - 18% 	<ul style="list-style-type: none"> • ELA - 59% • Math - 53% 	<ul style="list-style-type: none"> • ELA - 75% • Math - 75%

Intersession Program for SY 15-16

- **October 19th - 28th:** STEAM Centered Community Service
 - Community Art Projects
 - Environmental Stewardship
- **February 1st - 10th:** Maker Faire
 - Engineering Project Development
- **June 13th- June 16th:** Grade Level Camping
 - Orienteering and Navigation
 - Team Building

After-School Program

- **Guiding Principles:**
 - Free for all students
 - 3:30-5:00pm Monday to Thursday
 - 3-6 week cycles
 - Sign up required
- **Content:**
 - Academic Support: Office Hours, Literacy Intervention
 - Physical Activity: Basketball, Dodgeball, etc.
 - STEAM engagement: Revolution Lab, Clothing Design, etc.

Social-Emotional Learning

School Year 2015-2016

SEL Scope and Sequence

	2015					2016					
	August	September	October	November	December	January	February	March	April	May	June
Grade 6 <u>Essential Question:</u> How can I balance my needs and my projects in order to have a successful first year at EBIA?			Intro to School: EBIA Culture, Chromebooks, Classroom, Group Work	Project Management: Prioritizing, Organization Systems, Managing Group Roles and Tasks		Personal Care: Embracing Mistakes, Seeking Help	Identity: Who am I and how can I be an ally?	Healthy Lifestyle: Friendships, Outlets, Mindfulness		Personal Growth: Reflection & Goal-Setting	
Grade 7 <u>Essential Question:</u> How can I build and sustain healthy relationships through communication?			Reconnecting & Teambuilding: Welcome Back, Rebuilding Connections	Communication: Active Listening, Appropriate Help Seeking		Personal Care: Managing Stress, Setting Goals	Group Dynamics: Balanced Collaboration	Healthy Relationships:		Personal Growth: Reflection & Goal-Setting	
Grade 8 <u>Essential Question:</u> How can I be a leader in my community through my interactions with others?			Peer Leadership: Supporting Other	Healthy Relationships: Communication and Decision Making	Personal Care: Managing Stress, Setting Goals	Sex and Health Education				Personal Growth: Reflection & Goal-Setting	

DESEL Strategy

School Year 2015-2016

LCAP Goals

- **Discipline and Safety**
 - “I feel physically safe at EBIA”
 - Community satisfied with EBIA
- **Engagement and Culture**
 - Identify with EBIA’s mission (students and families)
 - Demonstrating Innovator norms
 - “part of the EBIA community”
 - College success

Addressing Identified Needs: Seneca Survey

- **Students**
 - Student Interactions
- **Faculty and Staff**
 - Communication
 - Restorative Justice - Training and Implementation
 - Tier II and Tier III - Interventions

High School Planning

School Year 2015-2016

Guiding Principles

- **Rigor**
 - College-centered learning model
 - AP courses integrated across 9-12
 - Focused STEAM pathways
- **Readiness**
 - Internship and apprenticeship opportunities
 - Individualized college planning support
 - Service Learning
- **Drive**
 - Self-Directed Learning
 - Curiosity and Creativity
 - Resilience

Sample Course Scope and Sequence

Grade	Math	Science	ELA	History	Comp. Sci.	Art and Design	Language	Guidance
9	Geometry	Biology AP Biology	English 1	World Geo. & History AP Human Geography	Comp. Sci. 2		Spanish 1/2	Max 1 AP Course in Year
10	Algebra II	Chemistry AP Chemistry	English 2 AP Eng. Lang.	World History AP World History	AP Comp. Sci. A	Graphic Design	Spanish 3/4 AP Spanish Lang.	Max 2 AP Courses in Year
11	AP AB Calc AP Stat Geo/Alg Mastery	Physics AP Physics 1	English 3 AP Eng. Lit.	US History AP US History	AP Comp. Sci. Principles	AP Studio Art: 2-D	AP Spanish Lang. AP Spanish Lit.	Max 2 AP Courses in Year
12	AP AB Calc AP BC Calc AP Stat Geo/Alg Mastery	AP Env. Sci. AP Physics 1 AP Physics 2 AP Biology AP Chemistry Bio/Chem Mastery	AP Research English 4 English 1-3 Mastery	AP US Gov. and Pol. World/US Mastery AP Seminar AP World History AP US History AP Human Geo. AP Psychology	AP Comp. Sci. A AP Comp. Sci. Principles	AP Studio Art: 3-D	AP Spanish Lit. AP Spanish Lang. Spanish Seminar	Max 3 AP Courses in Year

Sample Integrated Learning Scope and Sequence

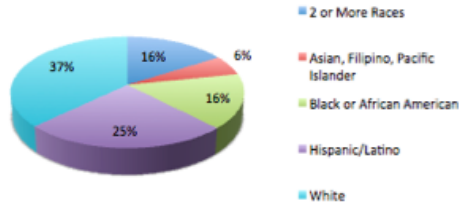
Grade	Interession	Apprenticeship	Guidance	After-School
9	Service Learning Apprenticeship Camping Academics	During Interession	Staff directed choice	Office Hours only
10	Service Learning Apprenticeship Camping Academics	During Interession Summer	Staff directed choice or Self- directed research and planning	Office Hours only
11	Service Learning Presentation of Learning Camping Academics	One Day a Week	Self-directed research and planning	Office Hours only
12	Service Learning Presentation of Learning Camping Academics	One Day a Week Semester Abroad/At Work	Self-directed research and planning	Office Hours only

Enrollment

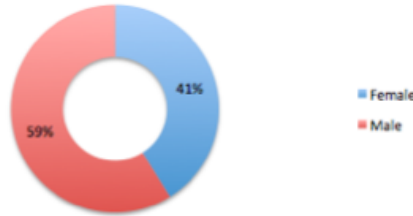
School Year 2015-2016

School-wide Demographic Data

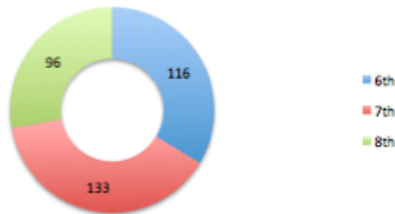
Racial Demographics



Gender



Grade Breakdown



IEP Case Portfolio: 10%

35 current, 5 pending

- Consistent Y/Y Zipcode representation (all Oakland)
- 46 Families (13%) Spanish Speaking
- Gender Breakdown ~ Consistent - **2014** 58:42%
- +1% increase in IEP Caseload Ratio (+16)

Enrollment and Outreach Planning

- **Information Nights**
 - General 6-12 sessions, occurring monthly
 - High school specific sessions, occurring monthly
- **School Tours**
 - Twice a week
- **Targeted Community Outreach**
 - Neighborhood specific information session
 - Current family high school information session
 - Target neighborhood “living room” information sessions

East Bay Innovation Academy

Budget vs. Actuals

As of August close

	Actual		Budget vs. Actual			Budget				
	Jul	Aug	Actual YTD	Budget YTD	Variance (YTD less Budget)	Approved Budget	Previous Month's Forecast	Current Forecast	Variance (Previous vs. Current Forecast)	Forecast Remaining
SUMMARY										
Revenue										
General Block Grant	-	56,298	56,298	78,077	(21,779)	2,446,331	2,438,900	2,438,900	-	2,382,602
Federal Revenue	-	-	-	1,131	(1,131)	217,262	213,881	213,881	-	213,881
Other State Revenues	-	4,841	4,841	14,729	(9,888)	329,532	349,015	349,015	-	344,174
Local Revenues	12	22,558	22,570	-	22,570	1,849	1,849	1,849	0	(20,721)
Fundraising and Grants	4,614	41,362	45,975	-	45,975	170,000	200,000	200,215	215	154,240
Total Revenue	4,626	125,059	129,684	93,937	35,747	3,164,974	3,203,645	3,203,860	215	3,074,175
Expenses										
Compensation and Benefits	31,955	86,094	118,049	218,754	100,704	1,990,115	2,008,255	1,982,103	26,152	1,864,054
Books and Supplies	51,950	31,868	83,819	29,846	(53,972)	199,221	199,221	211,221	(12,000)	127,402
Services and Other Operating Expenditures	13,828	37,187	51,015	52,507	1,491	814,101	832,327	839,400	(7,073)	788,384
Capital Outlay	-	-	-	-	-	-	-	-	-	-
Total Expenses	97,733	155,150	252,883	301,107	48,223	3,003,437	3,039,803	3,032,724	7,079	2,779,841
Operating Income (excluding Depreciation)	(93,108)	(30,091)	(123,199)	(207,169)	83,971	161,537	163,841	171,135	7,294	294,334
<i>Operating Income (including Depreciation)</i>	<i>(93,108)</i>	<i>(30,091)</i>	<i>(123,199)</i>	<i>(207,169)</i>	<i>83,971</i>	<i>161,537</i>	<i>163,841</i>	<i>171,135</i>	<i>7,294</i>	<i>294,334</i>
Fund Balance										
Beginning Balance (Unaudited)	33,476	(59,632)	33,476	33,476		33,476	33,476	33,476		
Audit Adjustment	-		-	-		-	-	-		
Beginning Balance (Audited)	33,476		33,476	33,476		33,476	33,476	33,476		
Operating Income (including Depreciation)	(93,108)	(30,091)	(123,199)	(207,169)		161,537	163,841	171,135		
Ending Fund Balance (including Depreciation)	(59,632)	(89,723)	(89,723)	(173,694)		195,012	197,317	204,611		

East Bay Innovation Academy
 Budget vs. Actuals
 As of August close

		Actual		Budget vs. Actual		Budget					
		Jul	Aug	Actual YTD	Budget YTD	Variance (YTD less Budget)	Approved Budget	Previous Month's Forecast	Current Forecast	Variance (Previous vs. Current Forecast)	Forecast Remaining
Detail											
Enrollment Breakdown											
	6						110	110	110	-	
	7						130	130	130	-	
	8						100	100	100	-	
	Total Enrolled						340	340	340	-	
ADA %											
	4-6						95%	95%	95%		
	7-8						95%	95%	95%		
	Average						95%	95%	95%		
ADA											
	4-6						104.5	104.5	104.5		
	7-8						218.5	218.5	218.5		
	Total ADA						323.0	323.0	323.0		

East Bay Innovation Academy

Budget vs. Actuals

As of August close

		Actual		Budget vs. Actual			Budget				
		Jul	Aug	Actual YTD	Budget YTD	Variance (YTD less Budget)	Approved Budget	Previous Month's Forecast	Current Forecast	Variance (Previous vs. Current Forecast)	Forecast Remaining
REVENUE											
LCFF Entitlement										-	-
8011	Charter Schools LCFF - State Aid	-	56,298	56,298	55,519	779	1,801,045	1,786,705	1,786,705	-	1,730,407
8012	Education Protection Account Entitlement	-	-	-	-	-	64,600	64,600	64,600	-	64,600
8096	Charter Schools in Lieu of Property Taxes	-	-	-	22,558	(22,558)	580,686	587,595	587,595	-	587,595
SUBTOTAL - LCFF Entitlement		-	56,298	56,298	78,077	(21,779)	2,446,331	2,438,900	2,438,900	-	2,382,602
8100 Federal Revenue		-	-								
8181	Special Education - Entitlement	-	-	-	1,131	(1,131)	22,618	26,250	26,250	-	26,250
8220	Child Nutrition Programs	-	-	-	-	-	30,618	30,618	30,618	-	30,618
8290	No Child Left Behind	-	-	-	-	-	-	-	-	-	-
8291	Title I	-	-	-	-	-	12,946	6,473	6,473	-	6,473
8292	Title II	-	-	-	-	-	1,080	540	540	-	540
8298	Implementation Grant	-	-	-	-	-	150,000	150,000	150,000	-	150,000
SUBTOTAL - Federal Income		-	-	-	1,131	(1,131)	217,262	213,881	213,881	-	213,881
8300 Other State Revenues		-	-								
8381	Special Education - Entitlement (State)	-	4,841	4,841	14,729	(9,888)	147,288	154,959	154,959	-	150,118
8382	Special Education Reimbursement (State)	-	-	-	-	-	-	7,467	7,467	-	7,467
8520	Child Nutrition - State	-	-	-	-	-	6,561	6,561	6,561	-	6,561
8550	Mandated Cost Reimbursements	-	-	-	-	-	4,522	2,937	2,937	-	2,937
8560	State Lottery Revenue	-	-	-	-	-	52,326	58,463	58,463	-	58,463
8590	All Other State Revenue	-	-	-	-	-	118,835	109,122	109,122	-	109,122
8599	Selpa Admin Offset	-	-	-	-	-	-	9,506	9,506	-	9,506
SUBTOTAL - Other State Income		-	4,841	4,841	14,729	(9,888)	329,532	349,015	349,015	-	344,174
8600 Other Local Revenue											
8660	Interest	0	0	0	-	0	-	-	0	0	-
8690	Other Local Revenue	-	-	-	-	-	1,849	1,849	1,849	-	1,849
8999	Uncategorized Revenue	12	22,558	22,570	-	22,570	-	-	-	-	(22,570)
SUBTOTAL - Local Revenues		12	22,558	22,570	-	22,570	1,849	1,849	1,849	0	(20,721)
8800 Donations/Fundraising											
8801	Donations - Parents	1,938	-	1,938	-	1,938	50,000	50,000	50,000	-	48,063
8802	Donations - Private	2,649	41,174	43,823	-	43,823	120,000	150,000	150,000	-	106,177
8803	Fundraising	27	188	215	-	215	-	-	215	215	-
SUBTOTAL - Fundraising and Grants		4,614	41,362	45,975	-	45,975	170,000	200,000	200,215	215	154,240
TOTAL REVENUE		4,626	125,059	129,684	93,937	35,747	3,164,974	3,203,645	3,203,860	215	3,074,175

East Bay Innovation Academy

Budget vs. Actuals

As of August close

		Actual		Budget vs. Actual			Budget				
		Jul	Aug	Actual YTD	Budget YTD	Variance (YTD less Budget)	Approved Budget	Previous Month's Forecast	Current Forecast	Variance (Previous vs. Current Forecast)	Forecast Remaining
EXPENSES											
Compensation & Benefits											
1000	Certificated Salaries	-	-								
1100	Teachers Salaries	9,020	44,505	53,525	98,273	44,748	939,000	937,500	932,500	5,000	878,975
1111	Teacher - Elective	-	-	-	-	-	39,600	39,600	39,600	-	39,600
1148	Teacher - Special Ed	1,220	3,172	4,392	12,273	7,881	125,000	115,440	114,440	1,000	110,048
1300	Certificated Supervisor & Administrator Salaries	14,600	12,917	27,517	39,667	12,150	238,000	120,000	120,000	-	92,483
1311	Director	-	-	-	-	-	14,280	225,000	146,250	78,750	146,250
SUBTOTAL - Certificated Employees		24,840	60,594	85,434	150,212	64,778	1,355,880	1,463,415	1,378,665	84,750	1,293,231
2000 Classified Salaries											
2103	Coordinator	407	-	407	-	(407)	35,700	-	407	(407)	-
2104	Instructional Assistant	-	141	141	-	(141)	89,250	79,380	79,380	-	79,239
2105	Classified - Custom 3	-	-	-	-	-	-	33,600	33,600	-	33,600
2300	Classified Supervisor & Administrator Salaries	-	2,222	2,222	-	(2,222)	27,000	-	61,250	(61,250)	59,028
2400	Classified Clerical & Office Salaries	4,013	4,570	8,583	12,255	3,672	134,800	79,250	79,250	-	70,668
2401	Classified Clerical & Office Salaries - Custom 1	-	-	-	-	-	3,000	3,000	3,000	-	3,000
SUBTOTAL - Classified Employees		4,420	6,933	11,352	12,255	902	289,750	195,230	256,887	(61,657)	245,535
3000 Employee Benefits											
3100	STRS	1,350	6,008	7,358	17,421	10,063	157,545	157,024	154,503	2,522	147,145
3200	PERS	-	-	-	-	-	-	-	-	-	-
3300	OASDI-Medicare-Alternative	636	3,092	3,728	4,263	534	40,753	36,393	36,052	341	32,324
3400	Health & Welfare Benefits	710	7,544	8,254	27,625	19,371	110,499	122,131	122,131	(0)	113,877
3500	Unemployment Insurance	-	957	957	2,170	1,213	21,700	19,964	19,964	-	19,007
3600	Workers Comp Insurance	-	966	966	4,808	3,842	13,988	14,098	13,902	196	12,936
SUBTOTAL - Employee Benefits		2,695	18,568	21,263	56,287	35,024	344,485	349,610	346,552	3,059	325,288

East Bay Innovation Academy

Budget vs. Actuals
As of August close

		Actual		Budget vs. Actual			Budget				
						Variance (YTD less Budget)		Previous Month's Forecast	Current Forecast	Variance (Previous vs. Current Forecast)	Forecast Remaining
		Jul	Aug	Actual YTD	Budget YTD		Approved Budget				
4000	Books & Supplies										
4100	Approved Textbooks & Core Curricula Materials	-	20,580	20,580	17,601	(2,979)	52,804	52,804	52,804	-	32,224
4200	Books & Other Reference Materials	-	-	-	-	-	1,600	1,600	1,600	-	1,600
4300	Materials & Supplies	1,073	540	1,613	3,135	1,522	9,405	9,405	9,405	-	7,792
4320	Educational Software	4,590	-	4,590	-	(4,590)	10,000	10,000	10,000	-	5,410
4330	Office Supplies	499	1,255	1,754	1,637	(117)	18,010	18,010	18,010	-	16,256
4400	Noncapitalized Equipment	1,917	-	1,917	5,872	3,955	14,681	14,681	14,681	-	12,764
4410	Classroom Furniture, Equipment & Supplies	-	-	-	800	800	2,000	2,000	2,000	-	2,000
4420	Computers (individual items less than \$5k)	43,871	9,493	53,364	-	(53,364)	42,000	42,000	54,000	(12,000)	636
4423	Staff Computers	-	-	-	800	800	4,800	4,800	4,800	-	4,800
4430	Non Classroom Related Furniture, Equipment & Supplies	-	-	-	-	-	180	180	180	-	180
4710	Student Food Services	-	-	-	-	-	43,740	43,740	43,740	-	43,740
SUBTOTAL - Books and Supplies		51,950	31,868	83,819	29,846	(53,972)	199,221	199,221	211,221	(12,000)	127,402

East Bay Innovation Academy

Budget vs. Actuals

As of August close

		Actual				Budget vs. Actual				Budget			
		Jul	Aug	Actual YTD	Budget YTD	Variance (YTD less Budget)	Approved Budget	Previous Month's Forecast	Current Forecast	Variance (Previous vs. Current Forecast)	Forecast Remaining		
5000	Services & Other Operating Expenses												
5210	Conference Fees	-	-	-	-	-	10,250	10,500	10,500	-	10,500		
5220	Travel and Lodging	-	-	-	-	-	2,700	2,700	2,700	-	2,700		
5300	Dues & Memberships	1,059	226	1,285	-	(1,285)	7,026	7,026	7,026	-	5,741		
5450	Insurance - Other	-	7,357	7,357	5,844	(1,513)	17,000	17,000	17,000	-	9,643		
5515	Janitorial, Gardening Services & Supplies	-	11,738	11,738	11,742	4	70,452	70,452	70,452	-	58,714		
5535	Utilities - All Utilities	-	735	735	8,031	7,297	48,188	50,732	50,732	-	49,997		
5611	Prop 39 Related Costs	-	-	-	-	-	104,226	104,226	104,226	-	104,226		
5615	Repairs and Maintenance - Building	-	-	-	-	-	2,011	2,011	2,011	-	2,011		
5616	Repairs and Maintenance - Computers	-	-	-	-	-	12,000	12,000	12,000	-	12,000		
5803	Accounting Fees	-	-	-	-	-	8,000	8,000	8,000	-	8,000		
5809	Banking Fees	57	18	75	50	(25)	300	300	300	-	225		
5810	Intersession	-	-	-	-	-	102,000	102,000	102,000	-	102,000		
5812	Business Services	10,833	10,833	21,667	11,818	(9,848)	130,000	130,000	130,000	-	108,333		
5815	Consultants - Instructional	600	-	600	2,667	2,067	8,000	8,000	8,000	-	7,400		
5820	Consultants - Non Instructional - Custom 1	-	-	-	-	-	25,000	25,000	25,000	-	25,000		
5824	District Oversight Fees	-	-	-	-	-	24,463	24,389	24,389	-	24,389		
5830	Field Trips Expenses	-	-	-	-	-	9,300	9,300	9,300	-	9,300		
5836	Fingerprinting	-	-	-	288	288	360	360	360	-	360		
5839	Fundraising Expenses	279	-	279	-	(279)	6,234	6,234	6,234	-	5,955		
5843	Interest - Loans Less than 1 Year	-	-	-	-	-	800	800	7,873	(7,073)	7,873		
5845	Legal Fees	-	1,786	1,786	9,167	7,381	55,000	55,000	55,000	-	53,215		
5851	Marketing and Student Recruiting	-	-	-	-	-	1,300	1,300	1,300	-	1,300		
5857	Payroll Fees	169	176	345	500	155	3,000	3,000	3,000	-	2,655		
5860	Printing and Reproduction	-	-	-	-	-	180	180	180	-	180		
5863	Professional Development	-	-	-	-	-	24,000	24,000	24,000	-	24,000		
5869	Special Education Contract Instructors	-	-	-	-	-	80,000	80,000	80,000	-	80,000		
5872	Special Education Admin Fee	-	-	-	-	-	-	9,506	9,506	-	9,506		
5875	Staff Recruiting	115	-	115	-	(115)	3,090	3,090	3,090	-	2,975		
5878	Student Assessment	-	-	-	-	-	3,090	3,090	3,090	-	3,090		
5881	Student Information System	-	-	-	-	-	11,850	11,850	11,850	-	11,850		
5884	Substitutes	-	-	-	-	-	24,182	24,182	24,182	-	24,182		
5887	Technology Services	-	-	-	-	-	3,579	9,579	9,579	-	9,579		
5900	Communications	715	1,150	1,865	2,400	535	14,400	14,400	14,400	-	12,535		
5905	Communications - Cell Phones	-	-	-	-	-	120	120	120	-	120		
5915	Postage and Delivery	-	-	-	-	-	2,000	2,000	2,000	-	2,000		
SUBTOTAL - Services & Other Operating Exp.		13,828	37,187	51,015	52,507	1,491	814,101	832,327	839,400	(7,073)	788,384		

East Bay Innovation Academy

Budget vs. Actuals

As of August close

		Actual		Budget vs. Actual			Budget				
		Jul	Aug	Actual YTD	Budget YTD	Variance (YTD less Budget)	Approved Budget	Previous Month's Forecast	Current Forecast	Variance (Previous vs. Current Forecast)	Forecast Remaining
6000	Capital Outlay										
6100	Sites & Improvement of Sites	-	-	-	-	-	-	-	-	-	-
6200	Buildings & Improvement of Buildings	-	-	-	-	-	-	-	-	-	-
6300	School Libraries	-	-	-	-	-	-	-	-	-	-
6400	Equipment	-	-	-	-	-	-	-	-	-	-
SUBTOTAL - Capital Outlay		-	-	-	-	-	-	-	-	-	-
TOTAL EXPENSES		97,733	155,150	252,883	301,107	48,223	3,003,437	3,039,803	3,032,724	7,079	2,779,841
6900	Total Depreciation (includes Prior Years)	-	-	-	-	-	-	-	-	-	-
TOTAL EXPENSES including Depreciation		97,733	155,150	252,883	301,107	48,223	3,003,437	3,039,803	3,032,724	7,079	2,779,841

East Bay Innovation Academy
Monthly Cash Forecast DRAFT
As of August close

	2015/16												Forecast	AP/AR
	Actual & Projected													
	Jul Actual	Aug Actual	Sep Projected	Oct Projected	Nov Projected	Dec Projected	Jan Projected	Feb Projected	Mar Projected	Apr Projected	May Projected	Jun Projected		
Beginning Cash	\$131,667	147,330	132,226	132,198	329,469	153,719	(40,019)	169	(51,900)	(6,565)	131,895	194,430		
Revenue														
General Block Grant	-	56,298	123,973	407,158	131,415	131,415	270,866	131,415	265,083	247,119	219,336	219,336	2,438,900	235,486
Federal Income	-	-	-	-	-	-	39,783	5,103	10,353	45,033	10,353	10,353	213,881	92,903
Other State Income	-	4,841	5,121	8,305	8,305	52,688	53,047	17,761	26,402	43,759	30,297	22,669	349,015	75,819
Local Revenues	12	22,558	(22,385)	185	185	185	185	185	185	185	185	185	1,849	-
Fundraising and Grants	4,614	41,362	(15,954)	21	21	21	8,355	28,355	33,355	33,355	33,355	33,355	200,215	-
Total Revenue	4,626	125,059	90,755	415,669	139,926	184,309	372,236	182,818	335,378	369,451	293,526	285,898	3,203,860	404,208
Expenses														
Compensation & Benefits	31,955	86,094	220,156	181,959	180,961	180,961	188,947	181,959	181,959	179,658	179,658	187,430	1,982,103	407
Books & Supplies	51,950	31,868	25,476	18,415	18,415	18,415	7,780	7,780	7,780	7,780	7,780	7,780	211,221	-
Services & Other Operating Expenses	13,828	37,187	113,574	56,905	60,324	105,187	63,298	57,362	104,185	55,768	55,768	102,509	839,400	13,506
Capital Outlay	-	-	-	-	-	-	-	-	-	-	-	-	-	-
Total Expenses	97,733	155,150	359,205	257,279	259,700	304,563	260,024	247,101	293,924	243,206	243,206	297,720	3,032,724	13,913
Operating Cash Inflow (Outflow)	(93,108)	(30,091)	(268,450)	158,390	(119,774)	(120,254)	112,212	(64,283)	41,454	126,245	50,320	(11,822)	171,135	390,295
Revenues - Prior Year Accruals	132,918	-	-	35,000	16,725	(1,117)	-	-	-	-	-	6,115		
Expenses - Prior Year Accruals	(16,040)	(2,977)	-	-	-	-	-	-	-	-	-	-		
Accounts Receivable - Current Year	-	-	-	-	-	-	-	-	-	-	-	-		
Accounts Payable - Current Year	(14,847)	16,813	-	-	-	-	-	-	-	-	-	-		
Summerholdback for Teachers	(23,260)	(7,337)	\$8,020.93	12,214	12,214	12,214	12,214	12,214	12,214	12,214	12,214	6,405		
Loans Payable (Current)	-	-	228,735	-	(76,582)	(76,248)	(75,905)	-	-	-	-	-		
Loans Payable (Long Term)	-	-	(8,333)	(8,333)	(8,333)	(8,333)	(8,333)	-	(8,333)	-	-	-		
Capital Leases Payable	-	-	-	-	-	-	-	-	-	-	-	-		
Other Long Term Debt	-	-	-	-	-	-	-	-	-	-	-	-		
Capital Expenditure & Depreciation	-	-	-	-	-	-	-	-	-	-	-	-		
Other Balance Sheet Changes	30,000	8,487	40,000	-	-	-	-	-	-	-	-	-		
Ending Cash	147,330	132,226	132,198	329,469	153,719	(40,019)	169	(51,900)	(6,565)	131,895	194,430	195,128		



East Bay Innovation Academy

15-16 Budget Update

September 16, 2015

Presented by: Renee Cooper

Financial Presentation Agenda



- 15-16 EBIA Budget Update
- Cash Flow Update

1. 15-16 EBIA Budget

8/15 Expected Operating Income Revised Upward to \$171K, Largely Due to Salary & Benefits



- Revenues: Local revenue to be moved to General Block Grant
- Expenses: Pro-rated certificated salary/benefits led to efficiencies and savings based on actuals (-\$26K), loan interest expense related to receivable sales cost (+\$7K)
- TBD: Director position for Curriculum Instruction (~\$110K with benefits)

	2015/16	2015/16	2016/17	2017/18
	Approved Budget	Current Forecast	Preliminary Budget	Preliminary Budget
SUMMARY				
Revenue				
General Block Grant	2,446,331	2,438,900	3,262,804	4,170,203
Federal Revenue	217,262	213,881	102,137	130,515
Other State Revenues	329,532	349,015	293,337	360,864
Local Revenues	1,849	1,849	97,292	211,917
Fundraising and Grants	170,000	200,000	190,000	200,000
Total Revenue	3,164,974	3,203,645	3,945,570	5,073,500
Expenses				
Compensation and Benefits	1,990,115	1,898,283	2,449,697	3,103,314
Books and Supplies	199,221	199,221	293,791	375,877
Services and Other Operating Expenditure	814,101	832,327	975,749	1,166,721
Capital Outlay	-	-	-	-
Total Expenses	3,003,437	2,929,831	3,719,237	4,645,913
Operating Income (excluding Depreciation)	161,537	273,813	226,333	427,587

2. Cash Flow

Cash Position Slightly Improved; Working Capital Obtained in September



- Cash shortfall in September projected to be around \$136K - \$140K (with or without the incremental position)
- Dec, Feb and Mar expected to be cash-negative
- Revenue catching up after P-1 certification, around Apr
- Financing obtained through Receivable Sales with Charter School Finance
 - May require 2nd round, late fall/early winter



2015-2016 Development Results & Plan

2015-2016 Goals	EBIA Budget Goal: \$200,000	EBIA Development Goal: minimum \$250,000				
	2015-2016 YTD	2015-2016 Goal	2014-2015 Results			
Grants Rewarded	\$40,000	\$80,000	\$40,000*	*30K Innovators Academies		
Community Donations	\$11,960	\$75,000	\$67,422			
Corporate Match Received	\$3,375		\$6,210			
Spring Fundraiser: Online Auction/Parent Event		\$45,000	\$34,708			
Retail Fundraising		\$0	\$0			
Total Received:	\$55,335	\$200,000	\$108,340			
Estimate Reoccurring Donations not billed (\$585 per month x 9 Months)	\$5,265					
Corporate Match Pledge	\$5,800					
Total Including Pledges:	\$66,400					
Participation:		65%	50%			
	Foundation Name	EBIA Requested Amount	Program being Funded	Notified of Outcome		
EBIA Grant Opportunities:	Long Foundation	\$20,000	Interession	Invitation for grant sent out 10/5/15		
	Lawerance Livermore	\$20,000	Interession	10/9/15		
	Venture Foundation	\$5,000	Quest Program Art & Sports	9/30/15		
Current Grant Funding Opportunity:		Up to \$45,000				
Other Grant Opportunities	PGE (\$10,000)	Clorox	Think Up (Individual Student Projects Funding)	Donor Choose (Teacher Projects Funding)	Google?	
Development 2015-2016 Expansion Opportunities:	* Parent Donations to Classroom	* Building Relationships & Marketing to potential major Donors	* Expand Retail & Local Business Donations	* Non-Profit and Corporate Partnerships for specific programs (Interession & Quest)	* Continue to build our Development Team	
Request to the Board:	The Development Team would like your support in providing us with potential grant opportunities, introductions to potential corporate, nonprofit partnerships and foundations. We also will welcome your support during our Fall Giving Drive.					



Special Education Local Plan

April, 2015

Jeremy M. Meyers, Superintendent of Schools
El Dorado County Office of Education

David M. Toston, SELPA Executive Director

CHAPTER III
GOVERNANCE AND ADMINISTRATION

GOVERNANCE AND ADMINISTRATION

PURPOSE

The El Dorado County Charter SELPA is composed of local educational agency charters (LEAs) located outside the geographic boundaries of El Dorado County. The El Dorado County Charter SELPA has designated the El Dorado County Office of Education as the Responsible Local Agency (RLA) and the County Superintendent of Schools as the Superintendent of the RLA.

As members of the El Dorado County Charter Special Education Local Plan Area (SELPA), (hereinafter referred to as Charter SELPA), each charter (as identified by the CDS (County, District, School) code issued by the State Board of Education) is considered an LEA (Local Education Agency) for purposes of special education.

The Charter SELPA further recognizes its' members as single charter partners or organization partners. Single Charter Partner is defined as an entity with one charter CDS code. An Organization Partner is an entity with multiple charters (CDS codes) as members of the Charter SELPA. An entity is defined as an organization with one governing board or one CEO (Chief Executive Officer) position. The title of CEO may differ by organization, but the intent is that final decision making in the organization is vested in one leadership position.

The function of the SELPA and participating agencies is to provide a quality educational program appropriate to the needs of each eligible child with a disability who is served by the Charter SELPA members.

All such programs are operated in a cost effective manner consistent with the funding provisions of Education Code Section 56700 et seq, IDEA, all other laws and policies, and the procedures of the El Dorado County Charter Special Education Local Plan Area.

CHANGES IN THE GOVERNANCE STRUCTURE

Any changes in the governance structure of the El Dorado County Special Education Local Plan Area, including the dividing of the SELPA into more than one operating entity, changing the designation of and/or responsibilities of the Responsible Local Agency, are subject to specific Provisions of Education Code Sections 56140, 56195, et seq., 56195.7 et seq., 56200 et seq., and 56205 et seq.

1. Any local agency which is currently designated as a Local Education Agency (LEA) participating in the El Dorado County Local Plan for Special Education may elect to pursue an alternative option from those specified in Education Code Section 56195.1 by notifying the appropriate county superintendent at least one year prior to the date the alternative plan would become effective (E.C. 56195.3(b)).

2. Any alternative plan of an LEA is subject to the approval of the county superintendent of the county or counties which would have school districts as participating agencies in the alternative plan. (E.C. 56195.1)
3. Approval of a proposed alternative plan by the appropriate county superintendent may be based on the capacity of the LEA Charter(s) to ensure that special education programs and services are provided to all children with disabilities. (E.C. 56140(b))
4. If an alternative plan is disapproved by a county superintendent, the county office shall return the plan with comments and recommendations to the LEA charter(s). The charter or charters participating in the alternative plan may appeal the decision to the Superintendent of Public Instruction. (E.C. 56140 (b) (2))
5. Any alternative plan to be submitted by a charter or a group of charters currently participating in the El Dorado County Charter SELPA must meet the standards established by the State Board of Education and not adversely affect the size and scope status of the current local plan geographic area.
6. Any changes in the designation of the responsible local agency for the El Dorado County Charter SELPA must conform to the above code provisions and the administrative provisions and the administrative provisions for approval as specified in the Local Plan

Disagreements among the participating agencies of the El Dorado County Charter SELPA are attempted to be resolved through dispute resolution procedures. If not resolved, the matter would be presented to the Chief Executive Officers' (CEO) Council for discussion and dispute resolution.

GOVERNANCE STRUCTURE OF THE PLAN

California Education Code Section 56200 (c) (2) requires that the Local Plan, "specify the responsibilities of each participating county office and district governing board in the policy-making process, the responsibilities of the superintendent of each participating district and county in the implementation of the plan, and the responsibilities of district and county administrators of special education in coordinating the administration of the plan." In accordance with this provision, the El Dorado County Charter SELPA has developed the following governance structure, policy development and approval process.

RESPONSIBILITIES OF EACH GOVERNING BOARD IN THE POLICY- MAKING PROCESS AND PROCEDURES FOR CARRYING OUT THE RESPONSIBILITY

Upon entry into the Charter SELPA, the governing board for each LEA charter shall approve the Agreement for Participation, Representations and Warranties, and the Local Plan for Special Education. The Charter SELPA Local Plan is approved by the CEO Council and the Board of the El Dorado County Office of Education. Amendments to the Local Plan to revise LEA membership (additions/deletions) shall be approved by the Board of the El Dorado County Office of Education. Prior to County Board approval, new LEA members and/or termination of LEA members shall be approved through the process as identified in Charter SELPA policies. All membership changes shall be communicated with the Charter SELPA CEO Council at the next regularly scheduled meeting.

The Board of the El Dorado County Office of Education will hold the required public hearings and approve the annual service plan and the annual budget plan. The plans shall be sent to all charter LEA members and communicated with the Charter SELPA CEO Council at the next regularly scheduled meeting. Notice of the public hearings shall be posted in each charter school at least 15 days prior to the hearing, as required by law.

As described within the Local Plan and adopted policies of the Charter SELPA, the Boards of Education delegate the ongoing policy-making process, the allocation plan process, and administrative procedures for carrying out that responsibility to the governance structure of the Charter SELPA.

RESPONSIBILITIES OF CHIEF EXECUTIVE OFFICERS CHARTER SELPA CHIEF EXECUTIVE OFFICERS' (CEO) COUNCIL

The Charter SELPA CEO Council membership consists of the CEO or designee of each charter LEA member. Each charter LEA member has one vote. Organization Partners, that operate more than one charter school, may have a single representative for all schools operated, but such representative shall have a number of votes equal to the number of charter LEAs represented.

Charter SELPA CEO Council meetings are subject to California Open Meeting laws, specifically the Brown Act (Government Code [54950-54963](#)), which requires that CEO Council members conduct business at properly noticed and agendized public meetings.

A majority of the LEAs present at a regularly scheduled and posted CEO Council meeting shall constitute a quorum.

The Charter SELPA CEO Council will meet regularly with the El Dorado County Superintendent of Schools and/or designee to direct and supervise the implementation of the Local Plan. The Council has exclusive authority to make and take all reasonable and appropriate steps to implement all decisions which may have a material effect on any and/or all Charter SELPA policies, practices, operations, organization, services,

functions, and any other purpose related to the purpose for which the Charter SELPA is established. A minimum of two meetings per year will be held; generally in September and May.

The Charter SELPA CEO Council is responsible to approve Charter SELPA policies and administrative regulations.

The Charter SELPA CEO Council is responsible to approve the Allocation Plan, which is the framework for distribution of funds within the Charter SELPA.

Material changes to the Local Plan, other than for membership changes, shall be approved by the Charter SELPA CEO Council and the Governing Board of the El Dorado County Office of Education.

Charter School Admission Criteria:

It is the intent of the El Dorado County Charter SELPA to provide options for charter schools in terms of SELPA membership. While it is always preferable for a charter school to participate with their geographic SELPA, the Charter SELPA has been developed to allow for a viable alternative for SELPA membership. Therefore, there are specific criteria which must be met in order for a charter school to be considered for membership in the El Dorado County Charter SELPA.

Charter SELPA Selection Committee

As outlined in Charter SELPA policies, a Charter SELPA Selection Committee has been established to approve the admission of new Charters to the SELPA. The Charter SELPA Selection Committee is comprised of:

- The El Dorado County Superintendent of Schools/Designee
- One Charter CEO, member of the CEO Executive Committee
- One Charter CEO selected by the El Dorado County Superintendent of Schools/Designee

The Charter SELPA Selection Committee will meet, review all documents, and approve or reject members. Because of a high volume of applications to the Charter SELPA, the Selection Committee may include more than one member of the CEO Executive Committee or CEO Council and more than one Charter CEO selected by the EDCOE County Superintendent/Designee in order to efficiently review the number of applications submitted. Meetings may take place through teleconference. For the purposes of this section, “teleconference” means a meeting where the members are in different locations, connected by electronic means, through either audio or video, or both.

The Charter SELPA Selection Committee will inform the CEO Council members of their decision. The Charter SELPA AU shall inform the charter school of the decision.

Any charter school may apply to the Charter SELPA Selection Committee to become a LEA member of the SELPA. The Charter SELPA will establish an annual timeline for submission of applications. Once granted membership, the charter LEA will participate in the governance of the SELPA in the same manner as all other charter LEA members in the SELPA. The timeline for submission may be amended by the Charter SELPA Superintendent/designee for unique circumstances, including State Board of Education charter approvals.

The applicant member, not an expansion of an existing member, will be deemed a member of the SELPA upon approval of the Charter SELPA Selection Committee, and subsequent Local Plan Membership amendment approved by El Dorado County Office of Education Governing Board, and the California Department of Education. The applicant member charter LEA board must also take action to approve membership.

The Charter SELPA Selection Committee shall review applications to determine if the applicants meet the requirements of the application process as established by the Charter SELPA. The Charter SELPA Selection Committee will inform the CEO Council members of their decision.

Applications for additional schools of a current Charter SELPA member, shall be approved by the Charter SELPA, pursuant to Charter SELPA policies, and are not required to be reviewed by the Charter SELPA Selection Committee. Because they are current members, the Charter SELPA has significant documentation available to assess the new charter LEA capacity.

The applicant member, an expansion of an existing member, will be deemed a member of the SELPA after approval of the Charter SELPA, and subsequent Local Plan Membership amendment approved by the El Dorado County Office of Education Governing Board, and the California Department of Education. The applicant member charter LEA board must also take action to approve membership.

Charter SELPA Membership Appeals Committee

The Charter SELPA Membership Appeals Committee meets on an “as needed basis” to hear Selection Committee appeals and membership termination appeals. The El Dorado County Superintendent/designee shall serve as an ex officio member of the Charter SELPA Membership Appeals Committee. An invitation to participate in the Membership Appeals Committee shall be issued annually at the first CEO Council meeting of the fiscal year.

Charter SELPA Membership Appeals Committee meetings are subject to California Open Meeting laws, specifically, the Brown Act (Government Code 54950-54963) which requires that SELPA Membership Appeals committee members conduct business at properly noticed and agendized public meetings.

CHARTER SELPA EXECUTIVE COMMITTEE

Responsibilities of the Charter SELPA Executive Committee

The Executive Committee shall serve as an informal advisory body to the Charter SELPA. The Executive Committee shall be comprised of all Charter SELPA CEO Council members who have an interest in participating as a committee member. Committee participation shall be at the discretion of individual members who shall be free to attend, or not attend, meetings as they choose. However, at no time shall an Executive Committee meeting be conducted with a majority of SELPA members.

Committee meetings shall occur from time to time on an informal basis as the Committee may determine. The Committee shall have no continuing subject matter jurisdiction. However, it is contemplated that the Committee shall, from time to time, consider and advise the Charter SELPA on administrative matters including, but not limited to, program operations, future strategic planning, procedural matters, and fiscal considerations.

An invitation to participate in the Executive Committee shall be issued annually at the first CEO Council meeting for the fiscal year. The El Dorado County Superintendent/designee shall serve as an ex-officio member of the Executive Committee.

Summaries of the Executive Committee meetings shall be transmitted to the full membership of the Charter CEO Council.

Special Education Community Advisory Committee (CAC)

Each charter school may select a parent representative to participate in the Special Education Community Advisory Committee to serve staggered terms in accordance with E.C. §56191 for a period of at least two years. Selected parents will be the parent of a child with a disability. This group will advise the Charter SELPA AU on the implementation of the El Dorado County Local Plan for Special Education in Charter Schools ("Local Plan") as well as provide local parent training options in accordance with the duties, responsibilities and requirements of E.C. § 56190-56194.

Because of the geographic diversity anticipated within the El Dorado County Charter SELPA, meetings may take place through teleconference. For purposes of this section, "teleconference" means a meeting where the members are in different locations, connected by electronic means, through either audio or video, or both.

Charter SELPA Special Education Steering Committee

The Steering Committee serves in an advisory capacity to the Charter SELPA. Each charter LEA is entitled to select one representative for this committee. The Steering Representatives are the charter LEA's special education directors or special education

program leads. They meet regularly for the purpose of advising the Charter SELPA and receiving and disseminating direct program/instructional information.

Charter SELPA Special Education Fiscal Committee

The Fiscal Committee meets twice per year. The designated fiscal representative from each charter LEA member is invited to attend. Charter CEOs and Special Education Administrative contacts are invited to attend as well. Meetings take place through teleconference. The meeting serves as a communication tool to inform fiscal contacts of actions taken by CEO Council that may have budgeting and financial reporting considerations.

FULL CONTINUUM OF SERVICES

Both state and federal law provides that students with exceptional needs are entitled to a free, appropriate public education (FAPE) that includes special education and related services to meet their unique needs in the least restrictive environment (LRE). Each SELPA member must ensure that all children served under their jurisdiction who have disabilities, regardless of the severity of their disability, and who are in need of special education and related services, are identified, located, evaluated and served. Therefore, a full continuum of services are available within the Charter SELPA.

Given this fact, the plan provides funding per the Charter SELPA Educational Allocation Plan to the Charter Schools so that they may appropriately provide for all the students with special education needs attending their schools. This obligation can be met in several ways, which may include:

1. Hire appropriately credentialed special education staff.
2. Contract with another LEA.
3. Contract with Nonpublic Schools/Agencies.

These methods of providing necessary services may be used by a single school in the Charter SELPA, or several schools within the Charter SELPA could join together to provide the services.

EVALUATION

E. C. 56600 was written, in part, to ensure that SELPAs participate with all State efforts to provide for ongoing comprehensive evaluation of special education programs in order to refine and improve programs, policies, regulations, guidelines, and procedures on a continuing basis, and to assess the overall merits of these efforts.

The El Dorado County Charter SELPA annually submits all information required by the California Department of Education, Special Education Division, in this effort, including statistical data, program information, and fiscal information related to the programs and services for children with disabilities in the El Dorado County Charter SELPA.

The Charter SELPA Administration is responsible for collecting all data required by the California Department of Education related to special education budgets and services, and reports them annually.

SELPA staff supports all members of the Charter SELPA in the collection of data related to compliance, due process procedures, availability of services, key performance indicators, etc., as needed.

DATA COLLECTION AND DEVELOPMENT OF MANAGEMENT INFORMATION SYSTEMS

California Department of Education requires of each SELPA the collection of specified data in such a manner as to be communicative with the CASEMIS – Management Information System of the State.

The Charter SELPA has designed and implemented a data collection and storage system that provides for the management and reporting of required data for state and federal systems. The SELPA continues to work with the State's Department of Management Information System to collect and report all required data related to special education fiscal and program services, and to provide other pertinent information necessary for the operation of the SELPA.

The Charter SELPA staff supports all the member LEA charter schools in the Charter SELPA in their collection and reporting of required data.

The Charter SELPA staff strives to support a system which is responsive to the data needs of the member LEA charter schools.

PROVISION FOR ONGOING REVIEW OF PROGRAMS

The State has in place a system for review of the special education programs in the charter schools. It is the responsibility of the SELPA to support the delivery of effective programs and services in its LEAs, to support a continuum of appropriate service

options, to improve the quality of the programs offered, and to monitor them and participate in review processes, including the Key Performance Indicator, the Procedural Safeguards, complaint processes and mediation and due process procedures.

The El Dorado County Charter SELPA endeavors first to provide adequate information, resources and support to all its member LEA charters, so that they may deliver compliant, quality services. Further, the Charter SELPA staff, under the direction of the CEO Council and in conjunction with the CAC and the informal advisement from the CEO Executive Committee, participates in all State review processes and any local review processes to ensure that appropriate and necessary services are offered for all children with disabilities and to support continuous improvement of those services.

The SELPA ensures that adequate information related to all areas of compliance is available to all the charter LEA members.

The SELPA ensures the availability of a full continuum of options, supplemental aids and services, and regionalized programs, for all children with disabilities, severe low incidence, and non-severe.

PROCESS FOR ALLOCATING PROGRAM SPECIALIST SERVICES THROUGHOUT THE REGION

The Charter SELPA currently employs program specialist(s). In addition, in accordance with Education Code §56780, all coordination responsibilities for program specialist services as outlined are fully supported through the governance structure of the SELPA. This includes the administrative staff, program specialist services, Charter Special Education Steering Committee, Charter Executive Committee, and Charter CEO Council. Openings for program specialist positions are advertised, and the selection processes conducted are consistent with County Office hiring practices. The interview panel includes representatives from LEAs, as well as SELPA personnel.

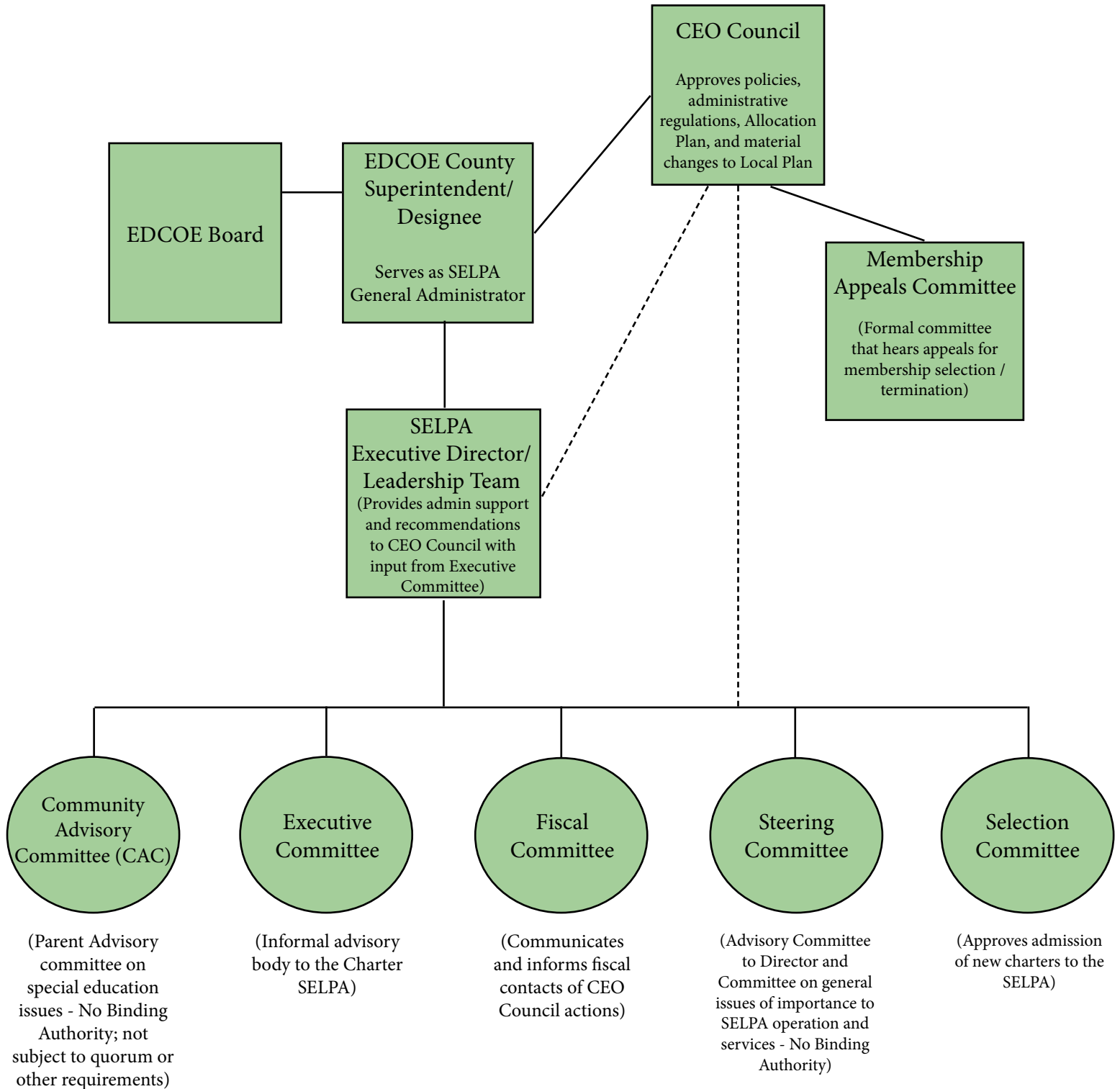
Duties of program specialists are those specified in Education Code §56368 and the Local Plan:

- A. Assist Resource Specialist, Designated Instruction and Service instructors, and Special Class Teacher in the planning and implementation of individual education programs for children whose disability is in the area or expertise of the Program Specialist.
- B. Coordinate curricular resources in a manner to make them available and effective for personnel who are in need of the resources.
- C. In conjunction with the SELPA Director, assess program effectiveness to promote the program for individuals with exceptional needs.
- D. Participate in school staff development, research, program development, and innovation or special methods and approaches.
- E. Provide coordination, consultation, and program development in areas to which the program specialist is assigned.

- F. Under the direction of the SELPA Director, assure the pupils have full educational opportunity, regardless of the district of residence in the Special Education Local Plan Area.
- G. Participate in I.E.P.s at the request of Local Education Agency or parent.
- H. Assist Local Education Agencies with non-public, non-sectarian and state school placements when requested.

Safeguards for the assurance of appropriate use of regionalized funds are the responsibility of the SELPA Executive Director and as approved by the governance structure. Program Specialist(s) are employed by the AU and supervised by the SELPA Director.

El Dorado County Charter SELPA Flow Chart



AGREEMENT FOR PARTICIPATION
EL DORADO COUNTY CHARTER SELPA

The El Dorado County Charter Special Education Local Plan Area (SELPA) as authorized by the California State Board of Education assists California charter schools that have successfully completed the SELPA membership process and have signed this Agreement for Participation (Agreement) which are deemed Local Educational Agencies pursuant to Education Code Section 47641, in meeting their obligations to provide special education and related services (each term as defined in 20 U.S.C. Section 1401 and the applicable rules, regulations and interpretive guidance issued thereunder and collectively referred to as Services) to applying or enrolled students actually or potentially entitled to Services under applicable state and federal laws and regulations (Students). SELPA Membership also ensures compliance with the LEA Member's obligations under Education Code Sections 56195, et. seq.

It is the goal of the El Dorado County Charter Special Education Local Plan Area (SELPA) that all charter pupils with exceptional needs within the SELPA receive appropriate special education programs. It is the intent of the Charter SELPA that special education programs be coordinated and operated in accordance with the governance structure.

The respective Charter Schools who are signatories hereto, the El Dorado County Office of Education (EDCOE), and the El Dorado County Charter SELPA, mutually agree as follows:

DEFINITIONS

LEA: as described in Education Code Section 56026.3., shall refer to a specific LEA Member Charter School or Charter School development organization as appropriate.

RLA: Responsible Local Agency, as described in Education Code Section 56030. Federal Regulations use the term "Administrative Unit" or "AU". For purposes of this Agreement, the El Dorado County Office of Education shall be the RLA or AU for the El Dorado County Charter SELPA.

Charter SELPA CEO Council: This group is composed of a representative from each Charter School in the Charter SELPA at the Chief Executive Officer level. Organizations that operate more than one Charter School at their option may have a single representative for all schools operated, but such representative shall have a number of votes equal to the number of schools represented. This group would meet regularly with the County Superintendent of Schools to direct and supervise the implementation of the Local Plan.

Charter Executive Committee: The Charter Executive Committee is comprised of representatives from the Charter SELPA CEO Council and shall include the El Dorado County Superintendent and staff designees.

Efforts will be made to ensure the committee has broad representation in a variety of areas; e.g. various geographical areas of the Charter SELPA, CMO representation, single charter, large charter, small charter, original founding members, new members. This committee serves as an informal advisory body to the Charter SELPA AU.

Charter Special Education Steering Committee: This Steering Committee serves in an advisory capacity to the Charter SELPA Executive Director. Each Charter School is entitled to select one representative for this committee – either a teacher or an administrator. Representatives commit to a full year of service, which would include meeting regularly for the purpose of advising the Charter SELPA Executive Director and receiving and disseminating direct program/instructional information.

Special Education Community Advisory Committee – CAC: Each Charter School shall be entitled to select a parent representative to participate in the Special Education Community Advisory Committee to serve staggered terms in accordance with E.C. § 56191 for a period of at least two years. Selected parents will be the parent of a child with a disability. This group will advise the Charter SELPA Executive Director on the implementation of the El Dorado County Charter SELPA Local Plan for Special Education in Charter Schools (“Local Plan”) as well as provide local parent training options in accordance with the duties, responsibilities and requirements of E.C. §§ 56190-56194.

Because of the geographic diversity anticipated within the El Dorado County Charter SELPA many meetings will be conducted through the use of teleconferencing or video conferencing.

IEP (Individualized Education Program): A plan that describes the child's current abilities, sets annual goals and instructional objectives, and describes the education services needed to meet these goals and objectives in accordance with E.C. § 56032.

IEP Team: A group of team members, as defined in Education Code § 56341, who meet for the purpose of determining student eligibility for special education and developing, reviewing, or revising a pupil's IEP and recommendations for placement.

LEA MEMBER RESPONSIBILITIES AND DUTIES:

Each LEA agrees that it is subject to the following responsibilities and duties under this Agreement, all adopted SELPA policies and procedures, the Local Plan, and governing federal and state laws and regulations (collectively, LEA Member Obligations), compliance with which is a condition precedent to membership, and continuing membership, in the SELPA, and these responsibilities and duties cannot be delegated to another entity.

The LEA Member as a participant in the Local Plan shall perform the following and be exclusively responsible for all costs, charges, claims and demands arising out of or related to its own pupils and its respective programs operated by the LEA Member:

- A. Adhere to the Local Plan, Policies and procedures as adopted by the Charter CEO Council.
- B. Select, compensate and determine the duties of the special education teachers, instructional aides, and other personnel as required to conduct the program specified in the Local Plan, and in compliance with state and federal mandates, Charter Schools may contract for these services;
- C. Conduct and/or contract those programs operated by the LEA Member in conformance with the Local Plan and the state and federal mandates;
- D. Organize and administer the activities of the IEP Teams, including the selection of the LEA Member staff and who will serve as members of the IEP Team in conformance with the Education Code Section 56341 and in compliance with the Local Plan;
- E. Organize and maintain the activities of the Resource Specialist Program in conformance with Education Code Section 56362; the Designated Instruction and Service in conformance with Education Code Section 56363; and Special Classes and Centers in conformance with Education Code Section 56364.1 and 56364.2; and in compliance with the Local Plan;
- F. Provide facilities as required to house the programs conducted by the LEA;
- G. Provide for the acquisition and distribution of the supplies and equipment for the programs conducted by the LEA Member;
- H. Provide and/or arrange for such transportation services as may be required to provide the special education programs specified that are conducted by the LEA Member;
- I. Cooperate in the development of curricula for the classes and the development of program objectives with the AU. Cooperate in the evaluation of the programs as specified in the Local Plan, with the AU;
- J. Cooperate in the development of the procedures and methods for communicating with the parents and/or legal guardians of the individuals served in conformance with the provisions of the Local Plan with the AU;
- K. Provide for the documentation and reporting of assessment procedures used for the placement of individuals and the security thereof. Provide for the continuous review of placements and the assessment procedures employed to insure their effectiveness and applicability, and insure the continued implementation and compliance with eligibility criteria;
- L. Provide for the integration of individuals educated under this agreement into the general education school programs and provide for evaluating the results of such integration according to specifications of the Local Plan;
- M. Conduct the review of individual placements requested by the

- parents and/or legal guardians of the individual in accordance with the Local Plan;
- N. Prepare and submit all required reports, including reports on student enrollment, program expenditures, and program evaluation;
 - O. Designate a person to represent the LEA Member on the Charter Special Education Steering Committee to monitor the implementation of the Plan and make necessary recommendations for changes and/or modifications;
 - P. Designate a representative for the LEA Member to serve on the Special Education Community Advisory Committee, in accordance with Education Code Section 56192-56193 and pursuant to the procedures established in the Local Plan;
 - Q. Designate the LEA Member Superintendent/CEO or School Leader by whatever name designated to represent the LEA Member on the Charter CEO Council to supervise and direct the implementation of the Plan;
 - R. Receive special education funding from El Dorado County in accordance with the Charter SELPA's Allocation and Budget Plan.
 - S. It is understood that except as otherwise may be specifically agreed from time to time the RLA shall have no responsibility for the operation of any direct educational program service of any kind.
 - T. Each LEA Member shall annually provide RLA with LEA Member's annual audit report, as conducted according to Education Code Section 47605(b)(5)(I). Annual submission shall be made annually, no later than January 31st. LEA Member further agrees to forward RLA copies of State Controller's Office communications regarding audit report corrective actions and a corrected audit report, if applicable. Should an LEA Member be the subject of a FCMAT report (or other agency review) that indicates concern with inappropriate use of funds, financial insolvency concerns, or operational concerns, the LEA Member shall notify RLA and provide the RLA with a copy of the report.
 - U. Charter LEA Member "Member" hereby agrees to indemnify and hold harmless the El Dorado County Office of Education "EDCOE", the El Dorado Board of Education, the El Dorado County Superintendent of Schools, the El Dorado County Charter SELPA, and attorneys hereby collectively referred to jointly as "SELPA", and all of their officers, directors, employees, agents, and representatives and attorneys against any and all claims, losses, penalties, fines, forfeitures, judgments, reasonable attorney's fees, and related litigation costs, fees, and expenses and amounts actually and reasonably incurred in settlement that result from any act or omission by or on behalf of Member by SELPA under this Agreement, unless the act or omission constitutes gross negligence, willful misconduct, or breach of fiduciary duty by any officer, director, partner, agent, or employee of SELPA in connection with SELPA's performance under this Agreement and the amounts would not have been covered under Members' insurance that result from any act or

omission constituting gross negligence or willful misconduct by any officer, director, or employee of SELPA in connection with SELPA's performance under this Agreement.

AU/RLA DUTIES AND RESPONSIBILITIES:

Pursuant to the provisions of Education Code Section 56030 et seq., the AU shall receive and distribute regionalized service funds, provide administrative support, and coordinate the implementation of the El Dorado County Local Plan for Special Education in Charter Schools participating in the Charter SELPA. In addition, the AU shall perform such services and functions as required to accomplish the goals set forth in the plan. Such services include, but are not limited to, the following:

- A. Act as agent for Charters participating in the Plan as specified in the Local Plan. Receive, compile and submit required enrollment reports and compute all special education apportionments as authorized under Education Code Section 56836 et seq. Receive data from each LEA Member to compile and submit budgets for the programs and monitor the fiscal aspects of the program conducted. Receive the special education apportionments of Regionalized Services as authorized under Education Code Section 56836.02;
- B. Coordinate with LEA Member's in the development and implementation of a systematic method for referring and placing individuals with exceptional needs who reside in the Charter, including the methods and procedures for communication with the parents and/or guardians of the individuals according to procedures in the Local Plan;
- C. Coordinate the development and implementation of curriculum and program objectives and provide for continuous evaluation of the special education programs in accordance with the Local Plan;
- D. Coordinate the organization and maintenance of the Special Education Community Advisory Committee (CAC) as part of the responsibility of the AU to coordinate the implementation of the plan pursuant to Education Code Section 56030. Provide for the attendance of designated members of the AU's staff at all regularly scheduled Special Education Community Advisory Committee meetings;
- E. Coordinate community resources with those provided by LEA Member and the AU, including providing such contractual agreements as may be required;
- F. Organize and maintain the Charter Special Education Steering Committee to monitor the operations of the Local Plan and make recommendations for necessary revisions, including, but not limited to:

1. Monitoring the application of eligibility criteria throughout the Local Plan area;
 2. Coordinating the implementation of the transportation for special education pupils;
 3. Coordinating the system of data collection, management, and evaluation;
 4. Coordinating personnel development and curriculum development for special education, including alternative dispute resolution;
 5. Coordinating the identification, referral, assessment, instructional planning, and review procedures, including the communication with parents and/or legal guardians regarding rights and responsibilities for special education;
 6. Developing interagency referral and placement procedures; and,
 7. Evaluating the effectiveness of special education programs.
- G. Support the Charter SELPA CEO Council by attendance and participation of the County Superintendent and/or designees and the Charter SELPA Executive Director at meetings;
- H. Provide for regular inservice training for AU and LEA Member staff responsible for the operation and conduct of the Local Plan. Regular inservice training may also be provided to CAC representatives;
- I. Provide the method and the forms to enable the LEA Member to report to the AU on student enrollment and program expenditures. Establish and maintain a pupil information system;
- J. Provide reasonable assistance to the LEA Member upon request from LEA Member administration, or individual cases, including but not limited to:
1. Complaint issues;
 2. Hearing issues; and
 3. Identification of appropriate programs for specific pupils.
- K. Perform other services reasonable and necessary to the administration and coordination of the Plan;
- L. Receive special education funding and distribute funds in accordance with the Charter SELPA Allocation and Budget Plan.
- M. Schedule a public hearing at the El Dorado County Office of Education for purposes of adopting the Annual Service Plan and Budget Plan.

PROVISIONS OF THE AGREEMENT

- A. Consistent with this Agreement each LEA Member shall have full and exclusive authority and responsibility for classifying employment positions within their respective LEA Member.
- B. No LEA Member may enter into any agreement, MOU or other undertaking that would bind or limit independent decision making on the same or similar matters by any other LEA Member.
- C. The managerial prerogatives of any participating LEA Member shall not be infringed upon by any other participating LEA Member except upon mutual consent of an affected LEA Member(s), or unless as otherwise set forth by this Agreement.
- D. Any LEA Member may terminate its Charter SELPA membership at the end of the fiscal year next occurring after having provided twelve months prior written notice as follows:
 - 1. Prior initial written notice of intended termination to the RLA of at least one year, and
 - 2. final written notice of termination to the RLA no more than six months after the LEA Member's initial notice of intended termination.

The RLA County Superintendent of Schools may terminate any LEA Member's Charter SELPA membership at the end of the fiscal year next occurring after having provided twelve months prior written notice as follows:

- 1. Prior initial written notice of intended termination to the LEA Member of at least one year, and
- 2. Final written notice of termination to the LEA Member no more than six months after the RLA's initial notice of intended termination.
- 3. Summary Termination:
Notwithstanding anything contained herein to the contrary, the Charter SELPA, in its sole discretion, may initiate and complete the termination process, as provided for herein, in accordance with standards and a reasonable summary timeline as determined by the Charter SELPA.

The summary standards and timeline as determined by the Charter SELPA shall, at a minimum, provide an LEA Member a reasonable opportunity for prior written notice and an opportunity to be heard.

Specifically the timeline and appeal process above does not preclude the Charter SELPA from initiating and completing the termination process in less than 12 months or by June 30th of the year immediately preceding the summary termination, if the member demonstrates:

- a) Egregious disregard of state and federal requirements to provide services to students, and/or
 - b) Demonstrated systemic and material issues that would cause the Charter SELPA AU to make a finding of “going concern” based on leadership, programmatic and/or fiscal solvency that would cause Charter SELPA AU to believe the Charter SELPA would be harmed by the continued membership of the LEA.
- E. Funding received by a charter is subject to the elements of the allocation plan. The Allocation Plan is updated on an annual basis and approved by CEO Council. Funding is subject to administrative fees, set-aside provisions, differentiated funding in year 1 and year 2, and potential recapture provisions if funds are not spent. All of these details are outlined in the allocation plan document. Participants agree by signing this document to agree to the provisions of the allocation plan.
- F. In accordance with their needs, the LEA Members and the AU in El Dorado County shall continue to manage and operate programs in their respective LEAs in accordance with Education Code Section 56172.
- G. The Charter CEO Council shall have the responsibility and right to monitor and correct any special education matter which affects the Special Education Local Plan Area. The AU staff shall be responsible for coordinating and informing the governance structure on any such matter.
- H. The LEA Members and the AU will maintain responsibility for program administration for the service they provide. All administrative requirements that govern that unit will be in effect regarding special education services. The Superintendent and/or Administrators of Special Education in each LEA Member and in the AU will be responsible for the daily operation of their respective programs.
- I. The student program placement is and shall remain the responsibility of the respective LEA Member. Student admission and transfer shall be determined in accordance with the respective charter, SELPA and El Dorado County Board policies and the respective charter, SELPA and El Dorado County procedures established in accordance with the identification, assessment, instructional planning and placement set forth in the Local Plan. Nothing contained herein shall be interpreted as providing automatic transfer rights to parents or students. The charter enrolling any pupil shall have the exclusive right to approve placement in any other agency. Each LEA of service shall have the right to determine if such LEA is able to provide a free, appropriate public education for the pupil.
- J. Supervision and other incidents of employment of special education

staff will be the responsibility of the respective LEA Member or AU. Each LEA Member and the RLA shall have full exclusive and independent control over the development, change, implementation and application of all evaluation procedures their respective LEA Member or in the RLA as the case may be. All LEA Members shall have full and exclusive authority to recruit, interview, and hire special education staff as needed by such LEA Member to provide continuity and service to their special education students.

- K. The Charter SELPA CEO Council shall approve Charter SELPA policies, administrative regulations, the Allocation Plan and material changes to the Local Plan. The El Dorado County Board of Education shall meet the legal requirement of conducting a public hearing and adopting the annual service plan and budget plan. These documents shall be provided to the CEO Council as an information item at their next regularly scheduled meeting.

WARRANTIES AND REPRESENTATIONS:

As a condition of membership, each LEA Member warrants and represents that at no time during such LEA Member's membership in the El Dorado County Charter SELPA shall any such LEA Member, directly or indirectly, provide special education funding for the benefit of a for-profit entity. All Funding provided through the El Dorado County Charter SELPA shall be treated as a restricted funding source to be expended only for special education or special education services. Nothing contained herein shall be interpreted as prohibiting any LEA Member from expending funds for certified agency or certified non-public school purposes for the benefit of children served, in accordance with the approved Master Contract as noted in Education Code.

STANDARD OF CONDUCT

Each LEA Member, at all times, shall conduct itself in such a manner as to act in the best interests of all other Charter SELPA members. LEA Members shall not engage in any activity or enterprise which would tend to injure or expose the Charter SELPA or any of its members to any significant risk of injury or any kind. No LEA Member shall undertake to independently act on behalf of the Charter SELPA or any of its members without express written authorization of the Charter SELPA.

RESERVATION OF RIGHTS

The RLA shall not be responsible for any LEA Member or Charter SELPA obligations or duties of any kind or nature except as explicitly set forth in this agreement.

INDEMNIFICATION AND HOLD HARMLESS

To the fullest extent allowed by law, each LEA Member agrees to defend, indemnify, and hold harmless the SELPA and its individual other Members, El Dorado County Office of Education, and the Superintendent, and each of their respective directors,

officers, agents, employees, and volunteers (the Indemnified Parties), from any claim or demand, damages, losses or expenses (including, without limitation, reasonable attorney fees) that arises in any manner from an actual or alleged failure by a LEA Member to fulfill one or more of the LEA Member's Obligations except to the extent that such suit arises from the RLA's negligence.

Further, the El Dorado County Charter SELPA shall be responsible for holding harmless and indemnifying the RLA for any costs of any kind or nature arising out of or related to this agreement other than as specifically contemplated herein, except to the extent that such cost arises from the RLA's negligence.

FULL DISCLOSURE

Except as otherwise prohibited by law, upon request by the Charter SELPA or any of its members, a Charter SELPA member shall provide any requested information, documents, writings or information of any sort requested without delay.

Representations and Warranties

1. Representations and Warranties:

As an inducement to, and in consideration for entering into this Agreement, the RLA specifically relies on the following express warranties and representations by LEA which LEA representative(s) who, by their signatures affixed below, declare that the following statements are true and correct:

For purposes of these representations and warranties, LEA may refer to an organization that manages and develops charter schools, but such representations and warranties shall only extend to the specific charter schools that are to be members of the El Dorado County Charter SELPA.

1. Except as set forth on attached Exhibit "A", as of the date signed below:

- a. To the knowledge of LEA, neither LEA nor any of its officers, employees, agents or representatives have any lawsuit or legal action of any kind, including bankruptcy, pending or threatened against them.
- b. LEA officers, employees, agents and/or representatives of the charter school adhere to California laws and regulations related to conflict of interest provisions.

EXHIBIT “A” (Representations and Warranties):

1. Material Pending or Threatened Litigation, Claims and Assessments:

LEA Member hereby represents and warrants that it has no material pending or threatened litigation, claims and assessments (excluding unasserted claims and assessments) against the LEA or any of its officers, agents, employees, or representatives. The term “material” used herein means items involving amounts exceeding \$10,000 individually or in the aggregate.

CHAPTER IV POLICIES / PROCEDURES

The El Dorado County Charter SELPA has adopted Policies and Administrative Regulations as outlined on the list on page 27. The Policies set forth in full within this document are included to fulfill Local Plan document requirements.

Changes to Policies may be approved at any CEO Council meeting, as long as Brown Act notice requirements have been met.

**El Dorado County Charter SELPA Policies
and Administrative Regulations**

1.	Comprehensive Plan for Special Education (5-22-14)	CEOP	AR
2.	Identification and Evaluation of Individuals for Special Education (3-31-08)	CEOP	AR
3.	Individualized Education Program (3-31-08)	CEOP	AR
4.	Procedural Safeguards and Complaints for Special Education (3-31-08)	CEOP	AR
5.	Confidentiality of Student Records (5-28-08)	CEOP	AR
6.	Part C – Transition (5-28-08)	CEOP	
7.	Students with Disabilities Enrolled by their Parents in Private Schools (5-28-08)	CEOP	
8.	Compliance Assurances (5-22-14)	CEOP	
9.	Governance (5-22-14)	CEOP	AR
10.	Personnel Qualifications (5-28-08)	CEOP	AR
11.	Performance Goals and Indicators (5-28-08)	CEOP	
12.	Participation in Assessments (5-28-08)	CEOP	AR
13.	Supplementation of State and Federal Funds (5-28-08)	CEOP	
14.	Maintenance of Effort (5-28-08)	CEOP	AR
15.	Public Participation (5-22-14)	CEOP	
16.	Suspension/Expulsion (5-28-08)	CEOP	AR
17.	Access to Instructional Materials (5-28-08)	CEOP	
18.	Overidentification and Disproportionality (5-28-08)	CEOP	
19.	Prohibition of Mandatory Medicine (5-28-08)	CEOP	
20.	Data (5-28-08)	CEOP	
21.	Literacy (5-28-08)	CEOP	
22.	Admission of LEAs to the Charter SELPA (5-22-14)	CEOP	AR
23.	Behavioral Interventions for Special Education Students (5-28-08)	CEOP	AR
24.	Nonpublic, Nonsectarian School and Agency Services for Spec. Ed. (5-28-08)	CEOP	AR
25.	Conflict of Interest (9-16-10)	CEOP	
26.	Termination of Membership (5-22-14)	CEOP	
		26.	

DISPUTE RESOLUTION PROCESS POLICY

Dispute Resolution Process Policy:

A. Rationale

In order to ensure the continual delivery of quality services to children with disabilities, a process for dispute resolution over the responsibility for service provision, governance activities, program transfer, or the distribution of funding must be in place.

B. Policy Statement

If a dispute arises over the responsibility for service provision, governance activities, program transfer, or the distribution of funding or if a charter LEA, group of charter LEAs, or the county office believes that an action taken by the CHARTER SELPA CEO Council will create an undue hardship on the member(s) or county office, or that the action taken exceeds the authority granted the Charter SELPA CEO Council within the Local Plan and/or state or federal statute, the aggrieved charter(s) or county office may request a review of the action at each level of the committee structure.

The following committees may review and provide recommendations to the Charter CEO Council:

1. Charter SELPA Steering Committee (limited to issues relating to service provisions)
2. Charter SELPA Executive Committee

The Alternative Dispute Resolution process and techniques are available in the SELPA, and the Solutions Panel model could and would be applied upon request of any parties.

Upon exhaustion of the review procedure as provided for herein, any LEA Member may appeal to an Ad Hoc Committee made up of:

1. County Superintendent's Designee
2. Charter SELPA CEO
3. CEO of a Charter School selected by the County Superintendent's designee and the Charter SELPA CEO. The CEO of a charter school does not have to be a member of the El Dorado County Charter SELPA.

The Ad Hoc Committee for resolving the conflict shall decide the matter at their discretion by majority vote of Ad Hoc Committee members present and whose decision is final. No written record, findings of fact, nor conclusions of law shall be required of the Ad Hoc Committee. The decision of the Ad Hoc Committee shall be communicated with the parties involved and the CEO Council at the next regularly scheduled meeting.

Check Register

East Bay Innovation Academy (EBIA)
July

2015



Grand Total

Vendor	Check Number	Date	Description
Alameda County Office of Education	3645	7/7/15	June 2015 STRS deposit due to Paychex error
Acer	3646	7/9/15	PO# 67993; Chromebook Repair
CFI	3647	7/9/15	HP Laserjet Toners & Catridge
EdTec	3648	7/9/15	Monthly Svc - June 2015
Sergio's Janitorial & Yard Services	3649	7/9/15	Svcs': Daily School Cleaning (Weekly) 06/01 - 06/30/15
EBMUD	3654	7/15/15	Acct# 49867400001; Water, Waste Water Charges & Sewer Svcs': 05/04 - 07/01/15
Illuminate Education	3655	7/15/15	Data and Assessment Management, Student Information, Inspect Item Bank & GradeCam
Kaiser Foundation Health Plan	3656	7/15/15	CustID: 000709549-0000; Insurance Premium August 2015 - DUE date: 07/25/15
Law Offices of Young, Minney & Corr, LLP	3657	7/15/15	Professional Svcs' through 06/30/15
Acer	3650	7/15/15	Cust# 218565; PO# 34468; Upper Case Assy W/Keyboard
Teach Speech	3651	7/15/15	Svcs': Speech & Language Therapy: June 2015
AT&T	3652	7/15/15	Acct# 072 085 5436 436; Fiber Circuit June 2015 - DUE date: 08/05/15
BoardOnTrack, Inc.	3653	7/15/15	Inv #1480; BoardOn Track Renewal Charter Starter Membership
BambooHR	DB071615	7/16/15	DB071615; Monthly Plan: 07/16 - 08/15/15
Acer	3658	7/21/15	Cust# 218565; PO# 3879279U; US Chrome U/BT SSD/3L
Wells Fargo	DB072115	7/21/15	DB072115 - Closing Date: 06/23/15
CDW Government	3659	7/21/15	Cust: 12218286; Acad Google Chrome OS MGT LIC
CFI	3660	7/21/15	HP Laserjet Toners & Catridge
Dustin Laun	3661	7/21/15	Consulting Svcs: 07/07/15
Office Depot	3662	7/21/15	Acct# 16610744; Office Supplies
Teachers on Reserve	3663	7/21/15	Cust: EASTB0001; Substitute Svc: 05/08/15
Wells Fargo	3666	7/27/15	Acct: 4856 2002 3423 9591 - Closing Date: 07/23/15- DUE: 8/13/15
Bloomerang	DB072915	7/29/15	DB072915; Bloomerang
CoPower	3664	7/29/15	ID#902360; Premium Aug '15
Vision Service Plan - (CA)	3665	7/29/15	Acct#30 050552 0001;Insurance Premium: August 2015

Note: Multiple expenses or "Itemized/Invoice Amounts" may be paid by one check. The total "Check Amount" will appear for each "Itemized/Invoice Amount" paid by the check.

Vendor	Check Number	Date	Description
--------	--------------	------	-------------

Note: Multiple expenses or "Itemized/Invoice Amounts" may be paid by one check. The total "Check Amount" will appear for each "Itemized/Invoice Amount" paid by the check.

81,801.66

Check Amount
4,492.68
129.99
1,686.30
8,401.77
2,624.00
1,474.43
4,666.65
340.21
6,117.45
1,087.82
917.50
388.55
960.00
99.00
528.80
1,538.84
43,342.05
180.68
600.00
223.51
410.20
600.77
267.30
629.11
94.05

Note: Multiple expenses or "Itemized/Invoice Amounts" may be paid by one check. The total "Check Amount" will appear for each "Itemized/Invoice Amount" paid by the check.

**Check
Amount**

Note: Multiple expenses or "Itemized/Invoice Amounts" may be paid by one check. The total "Check Amount" will appear for each "Itemized/Invoice Amount" paid by the check.

ASSURANCES

In accordance with Federal and State laws and regulations, East Bay Innovation Academy certifies that this plan has been adopted by the appropriate local board(s) (district/county) and is the basis for the operation and administration of special education programs; and that the agency herein represented will meet all applicable requirements of state and federal laws, regulations and state policies and procedures, including compliance with the Individuals with Disabilities Education Act, 20 *United States Code (USC)* 1400 et seq., and implementing regulations under 34 *Code of Federal Regulations (CFR)*, Parts 300 and 303, 29 *USC* 794, 705 (20), 794- 794b, the Federal Rehabilitation Act of 1973, as amended, and the provisions of the California *Education Code*, Part 30 and Chapter 3, Division 1 of Title V of the *California Code of Regulations*.

Be it further resolved, the local educational agency (LEA) superintendent shall administer the local implementation of procedures, in accordance with state and federal laws, rules, and regulations, which will ensure full compliance.

Furthermore, the LEA superintendent ensures that policies and procedures covered by this assurance statement are on file at the LEA and the SELPA office.

Adopted this 16th day of September, 2015.

Yeas: _____ Nays: _____

Signed: _____

Name and Title: *Laurie Jacobson Jones, Board Chair*